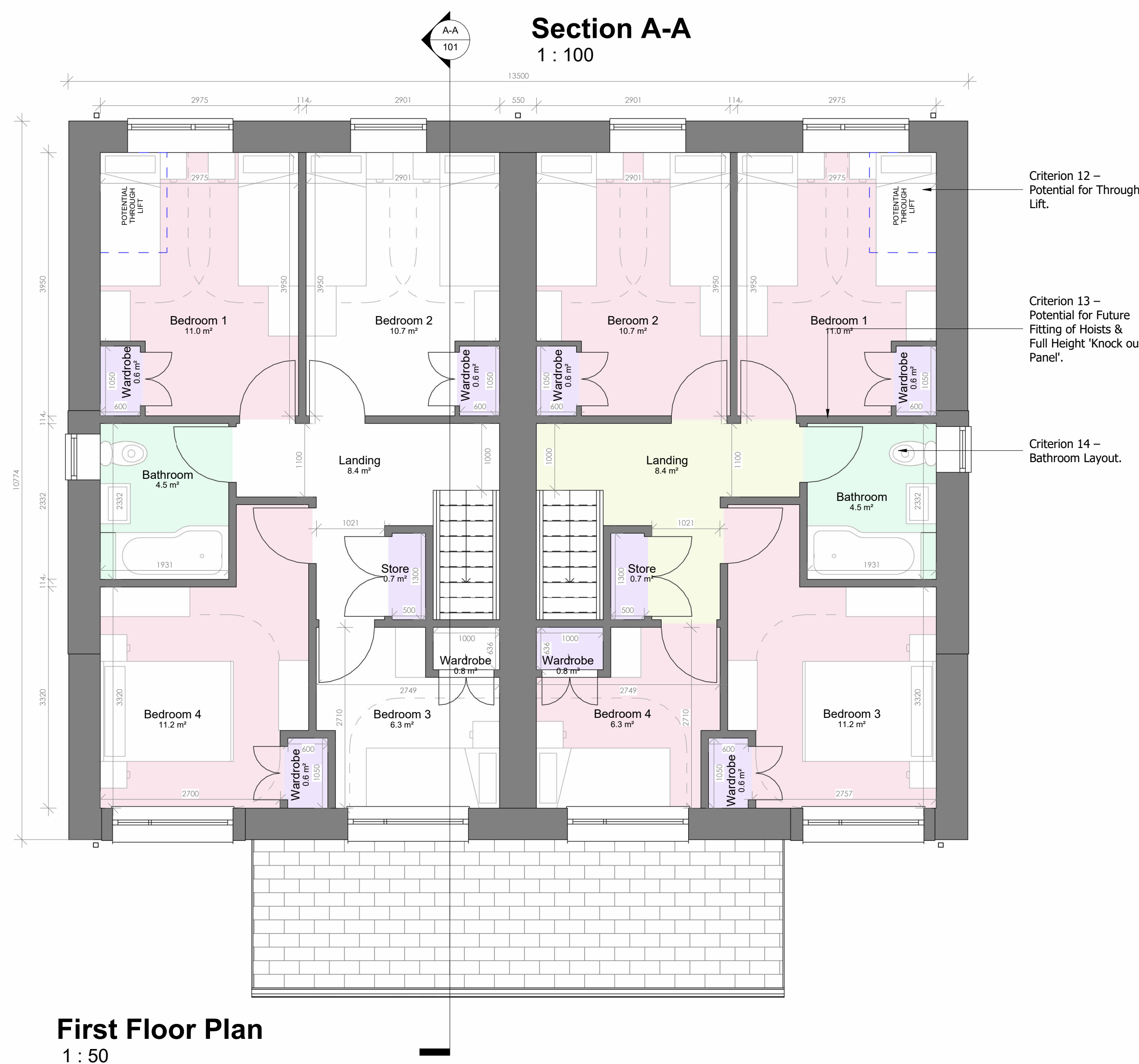


-  Bathroom
-  Bedrooms
-  Circulation
-  Kitchen
-  Living Areas
-  Plant
-  Storage

GIA: 119.8m²

Internal GIA is approx 5.8m in excess of WDQR *minimum* floor areas however, this is a result of each room being planned to comply with lifetime home & DQR access requirements, alongside additional sponsor instruction to include built in wardrobes etc.

The area can be reduced, although this will require omission of built in wardrobes and limit the flexibility of the spaces.

[illegible]